



## Channelsea House 20 Canning Road, London, E15 3FA

**£380 Per Week**

A 1 BEDROOM APARTMENT FOR RENT WITH ITS OWN 30 FOOT PRIVATE WEST FACING ROOF TERRACE!

The apartment comprises a bright west facing reception room with access to a private terrace overlooking the Channelsea river, modern fitted kitchen, double bedroom with built in storage and a modern shower room.

The property is located in Stratford E15, only a 5 minute walk from the DLR station which will take you to Stratford International station or towards Woolwich Arsenal.

The development is also by the entrance to the Greenway 7km cycle and walking paths and a short commute to the shopping facilities of Westfield.

COMES FURNISHED

AVAILABLE FROM 16.07.2026

- COMES FURNISHED
- WEST FACING
- BY ABBEY ROAD DLR STATION
- STRATFORD
- 30 FOOT PRIVATE TERRACE
- AVAILABLE FROM 16.07.2026
- 1 BEDROOM APARTMENT
- 1ST FLOOR

# Channelsea House 20 Canning Road, London, E15 3FA



CHANNELSEA HOUSE



HALLWAY



RECEPTION ROOM



BATHROOM



TERRACE



BEDROOM

# Channelsea House 20 Canning Road, London, E15 3FA



**BEDROOM**



**KITCHEN**

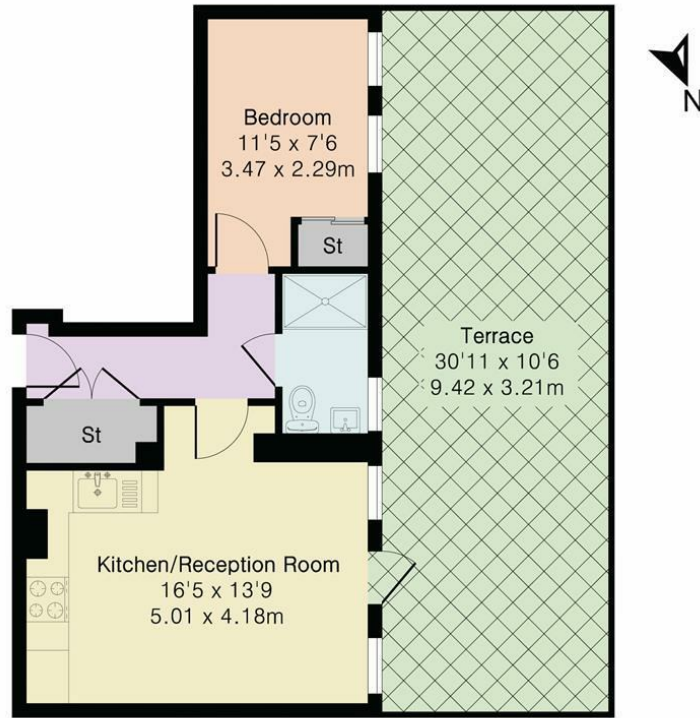


**RECEPTION ROOM**



**RECEPTION ROOM**

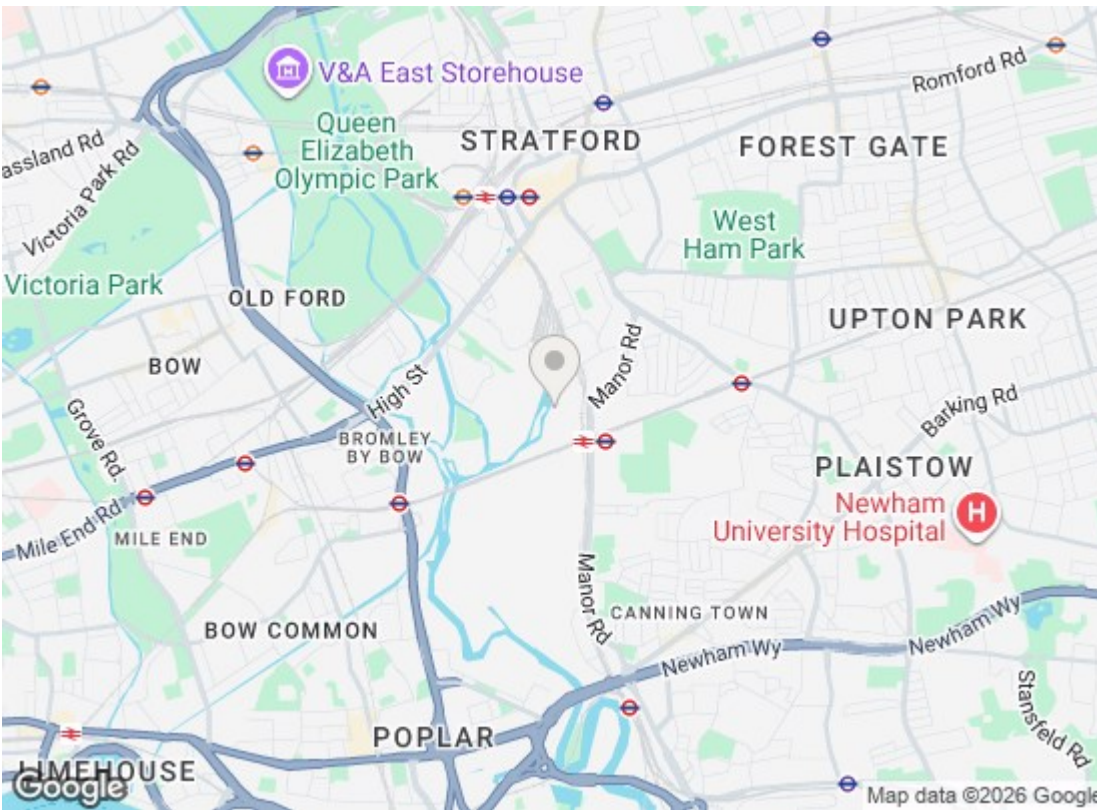
Approximate Gross Internal Area 381 sq ft - 35 sq m



First Floor



Floor plan produced in accordance with RICS Property Measurement 2nd Edition. Although Pink Plan Ltd ensures the highest level of accuracy, measurements of doors, windows and rooms are approximate and no responsibility is taken for error, omission or misstatement. These plans are for representation purposes only and no guarantee is given on the total square footage of the property within this plan. The figure icon is for initial guidance only and should not be relied on as a basis of valuation.



Energy Efficiency Rating		
	Current	Potential
Very energy efficient - lower running costs		
(92 plus) <b>A</b>		
(81-91) <b>B</b>		
(69-80) <b>C</b>	72	72
(55-68) <b>D</b>		
(39-54) <b>E</b>		
(21-38) <b>F</b>		
(1-20) <b>G</b>		
Not energy efficient - higher running costs		
England & Wales		EU Directive 2002/91/EC
Environmental Impact (CO <sub>2</sub> ) Rating		
	Current	Potential
Very environmentally friendly - lower CO <sub>2</sub> emissions		
(92 plus) <b>A</b>		
(81-91) <b>B</b>		
(69-80) <b>C</b>		
(55-68) <b>D</b>		
(39-54) <b>E</b>		
(21-38) <b>F</b>		
(1-20) <b>G</b>		
Not environmentally friendly - higher CO <sub>2</sub> emissions		
England & Wales		EU Directive 2002/91/EC

We have prepared these property particulars as a general guide to a broad description of the property. They are not intended to constitute part of an offer or contract. We have not carried out a structural survey and the services, appliances and specific fittings have not been tested. All photographs, measurements, floorplans and distances referred to are given as a guide only and should not be relied upon for the purchase of carpets or any other fixtures or fittings. Lease details, service charges and ground rent (where applicable) and council tax are given as a guide only and should be checked and confirmed by your Solicitor prior to exchange of contracts.